



LEWIS SCHOOL PENGAM

YSGOL LEWIS PENGAM

## Transition Information Booklet Llyfryn Gwybodaeth Pontio





# Welcome to Lewis School Pengam Croeso i Ysgol Lewis Pengam

## Headteacher/ Prifathro: Mr Parry



Welcome to the transition booklet for Lewis School Pengam. It is my privilege to be the Headteacher of this amazing school, where, with the help of a highly qualified, inspirational and dedicated team of staff, we work hard every day to improve the lives of the young people who come to us. Our primary purpose as a school is to provide every young person who walks through our doors with the necessary experience, skills and qualifications to go on to realise their potential in a world that is increasingly demanding.

At Lewis School Pengam we are very proud of our strong heritage and values. Founded in 1729, our school motto “Ni ddychwel doe - yesterday never returns” is very much a principle to live by. We believe every moment counts in the education of the young people who are part of our community. Our teachers and support staff are innovative, skilled, professionals, who go the extra mile to develop an engaging and inspirational modern learning environment for our students. The achievements of all our pupils are highly valued, whether these are academic, sporting, artistic, or even overcoming adversity in life. Year in year out, it is a pleasure to see how so many of our students gain entry into the top universities in the country or gain prestigious apprenticeships and go on to enjoy successful careers across a wide range of professions.

Over the last few years, we have been at the forefront of developing a new curriculum for our pupils in year 7 and 8, In doing this, we have tried to put the needs of our pupils at the heart of everything we do. We endeavour to never lose sight of the individual needs of each and every child. Every one of our learners is different, and each one of them deserves success.

At Lewis School Pengam educational inclusion, wellbeing and equity is vitally important to us. We believe in equal opportunities for all pupils, regardless of age, gender, ethnicity, attainment and background. An educationally inclusive school is one in which the teaching and learning, achievements, attitudes and wellbeing of every young person matters. Ultimately, we want to work with you to ensure that all our students develop the knowledge, skills and character to become the best person they can be.

Chris Parry - Headteacher



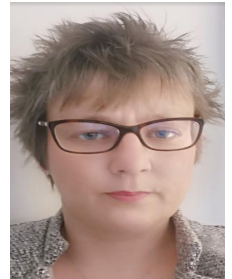


# The Transition Team

## Y tîm pontio

### Assistant Headteacher:

### Mrs McCarthy



My name is Mrs McCarthy and have the overall responsibility for teaching and learning, literacy, transition and bilingualism at Lewis School Pengam. I have been teaching at Lewis School Pengam for 10 years and specialise in French. In addition to this, I am very fortunate and privileged to be part of the Communication team, teaching the pupils at year 7.

As a mother myself, I fully appreciate the importance of the transition process. We have a range of transition activities organised over the academic year which we are confident will prepare your son for the new chapter in his education with us in September. We are an experienced team who have the wellbeing of all of our pupils at the forefront of all that we do. Happy children achieve and succeed!

I very much look forward to meeting your son, to welcome him to our school community and to working with him and yourself over the coming years. Hwyl am y tro.



## **Head of Lower School: Mrs Oliver** **Pennaeth Ysgol Isaf**

Shw mae! My name is Mrs Oliver and I am Head of Lower School at LSP. I will be your child's Head of Year while he is in year 7 and 8. I have been a teacher at LSP for 20 years and my subject is Welsh. I love the school and it has been a very important part of my life. I think the thing that sets us apart as a school is our family and community ethos. We are an incredibly nurturing and caring school where wellbeing as well as education is our priority. We are a very inclusive school and our aim is to see our students thrive.

As a mother of two boys, I can relate to any worries or concerns you have as parents sending your children to 'big school' for the first time. Our aim is to make school a fun, enjoyable and safe place to be and we do all we can to ensure that their time and experiences here are positive.

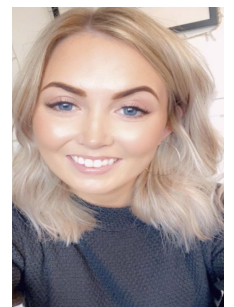
To ensure this, Lower School students are located together for their learning. Each teaching group is allocated their own classroom. Our students favour this as it means they always know where to go and their teachers travel to them for some of their lessons. It allows them to explore other areas of the school in their own time and eliminates the possibility of getting lost. I am also located on the same and so students always know where I am or where to find me.

We can't wait to meet your children and to greet you all to Lewis School Pengam. It is a privilege to have the opportunity to be a part of their lives and make their memories of school unforgettable!

## **Associate Head of Lower School: Miss Thomas**

Hello! My name is Miss Thomas and I am the Associate Head of Lower School here at Lewis School, Pengam. I have been a teacher here at Lewis School Pengam for 7 years and teach Communication and English.

As the Associate Head of Lower School, I work closely with Mrs Oliver to ensure that all pupils settle into school here. I absolutely love greeting our new pupils and getting to know them throughout their first year and feel extremely privileged to be a part of such an important transition for them. I also am lucky enough to be a communication teacher. This subject currently comprises of English, Welsh, French, History and Geography. This means that the pupils have the opportunity to explore a variety of interesting topics throughout the year. It also allows for pupils to experience some fantastic opportunities and to visit local historical sites as well as being able to attend live theatre performances and outdoor activities.



I look forward to meeting everyone in September!



# Additional Learning Needs (ALN) Anghenion Dysgu Ychwanegol (ADY)

We are an inclusive school and endeavour to support all of our pupils to make progress. All pupils have access to the full range of subjects, ensuring they access a broad and balanced curriculum. All of our teachers are teachers of ALN and our ALNCo and team support both teachers and pupils with bespoke and closely monitored provisions. We work closely with the child, families and specialist services to ensure that we have a child centred approach to support. Some pupils are allocated one to one support, where appropriate, to support both their learning and their emotional development.

Pupil information will be shared by primary schools with our ALNCO (Additional Learning Needs Co-ordinator) Miss Clark and her team. Miss Clark should also be invited to any PCP meetings held over the summer term.

If you'd like to email Miss Clark with any queries regarding our ALN provision, or to book a video chat/ phone call, her email is [clarkh@lsp.wales](mailto:clarkh@lsp.wales)





# Daily life at Lewis School Pengam

## Amserlen y dydd

- **School Day:**

Our school day starts at 8.30am with registration. Pupils will be welcomed by their form tutor when the first bell of the day rings! We have 5 one hour lessons, with a morning and lunch break.

8.30am	Registration
8.40am	Lesson 1
9.40am	Lesson 2
10.40am	Break
10.55am	Lesson 3
11.55am	Lesson 4
12.55pm	Lunch
1.25pm	Registration and lesson 5
2.30pm	End of day

- **School Term Dates (these do not include INSET days):**

Please visit the CCBC website for the term dates. Link:

<https://www.caerphilly.gov.uk/Services/Schools-and-learning/Schools,-term-dates-and-closures.aspx>

- **INSET days:** These dates are to be found on our website.



# Our Challenge Curriculum

## Ein Cwricwlwm





Our Challenge curriculum is a broad and balanced curriculum that is suitable for learners of different ages, abilities and aptitudes. We offer our pupils a wide range of learning and teaching experiences as well as enrichment opportunities to allow them to develop in the way described in the four purposes. Our challenge curriculum is organised into six areas which encompass a range of subject areas. We run a fortnightly timetable (week 1/ week 2). Your son will receive his timetable in September.

<b>Challenge Curriculum Area (alphabetical)</b>	<b>Subjects included within the curriculum area</b>	<b>Hours per fortnight</b>
<b>Calculation</b>	mathematics and numeracy	8 hours
<b>Citizenship</b>	physical education (physical health and development), mental health and emotional and social wellbeing	7 hours
<b>Communication</b>	English, French and Welsh	14 hours
<b>Community</b>	geography, history, religion, values and ethics, business studies and social studies	5 hours
<b>Construction</b>	science and design and technology and computer science	10 hours
<b>Creativity</b>	art, drama and music.	6 hours



# Our Curriculum

Our curriculum is to enable our learners to develop as:

	<b>Ambitious capable learners</b>
	<b>Enterprising, creative contributors</b>
	<b>Ethical, informed citizens</b>
	<b>Healthy, confident individuals</b>

We have a thematic approach to our curriculum - some are whole school themes. Our main priority and focus is to:

- enable our learners to make progress towards the four purposes (see above)
- ensure a broad and balanced curriculum which excites and engages our pupils
- ensure a curriculum which challenges and supports all of our pupils - 'Every person matters'
- ensure that all of our pupils make progress in both skills and subject knowledge.





## Skills/ Sgiliau

We endeavour to plan, resource and deliver a curriculum which is skills rich. Our pupils will have every opportunity to develop and make progress in their **literacy, numeracy and digital competence** skills. This is planned to ensure that pupils are taught, and then can apply and consolidate their skills in a range of curriculum areas throughout the academic year.

In addition to this, pupils have a dedicated one hour session of reading per week in our school library, following the Accelerated Reader programme. We expect all of our pupils to dedicate at least 20 minutes every evening to reading.



At Lewis School Pengam, we use the **Google platform** to support learning and teaching. Pupils use school based chromebooks in a variety of lessons, thus allowing them to develop their digital skills, using a range of Google applications for different purposes. Every subject has a Google Classroom where pupils complete certain aspects of their work. These Google Classroom codes will be shared with your son in September. Pupils may be asked to use their Google Classroom to complete their homework - you can access Google Classroom via a range of devices including desktop computer, laptops, tablets, chromebook, gaming devices and mobile phones. Further support resources will be shared with you in September.



Google Classroom



# Year 7

## Blwyddyn 7

- **Classes/ House**

Your son will remain in the same class setting for most of his lessons, including his form time. This allows our pupils to develop excellent relationships with their peers. Classes are organised as Lewis(L); Eglwys(E); Mabon (W); Islwyn (I); Sanan (S). These classes are also the 'House' groupings for inter-school competitions such as school sports day, Eisteddfod etc.

As our curriculum is organised into six areas of learning, your son will be taught by a smaller number of teachers than what we might traditionally expect in a secondary school. Potentially, your son may be taught by 6 teachers - again, this allows him to build and foster excellent relationships with his teachers which supports his transition.

Classes are organised on a mixed ability basis in 5 areas of the curriculum, with calculation classes being set according to ability.

- **Pastoral/ Form**

Mrs Oliver is the Head of Lower School (year 7 and 8) with Miss Thomas the Associate Head of School. For pastoral and wellbeing support, your son will attend registration with a 'form tutor' every day. The form tutor will focus and support your son with the transition process as well as his overall wellbeing throughout the year.

- **Getting involved**

Your son will have the opportunity to get involved in numerous activities. We encourage all of our pupils to make the most of all opportunities and experiences offered to them through the curriculum areas and as part of the wider extra-curricular calendar.

In addition to this, each form class will need to elect representatives who will play a vital role in whole school activities. These include:

- Sports Captain
- Criw Cymreig
- School Council
- Eco Council
- Digital Leader



We encourage them to engage and enjoy **all** aspects of school life.



# School Uniform

## Gwisg ysgol

Our school uniform is seen below. Our logo on the polo shirt and jumper is as follows:



YES	NO
Black school jumper with logo visible	Hoodies
White school polo shirt with logo	Trainers
Black formal trousers	Jeans
Black smart shoes	Small shoulder bags
School bag (at least A4 size)	Skater shoes/ Trainers
Dark coloured jacket/coat	



## Citizenship/ Sports kit Cît ymarfer corff

Pupils will require the following kit for PE and Citizenship lessons. This kit can also be used for extra curricular activities and when representing the school in sporting activities.



Outdoor/Winter jersey



Indoor/Summer T-shirt



Back shorts (plain)



LSP/Plain Black sport socks

To clarify, the outdoor/winter jersey is required by all pupils and is not just a rugby jersey. This will be worn for outdoor and winter lessons. It may also be used by pupils who represent the school in rugby or football. Depending on the activity and the time of the year, pupils will be told which top to bring. ALL pupils are expected to have an outdoor jersey as well as a t-shirt.

- **PE kit - Footwear.**

Pupils will take part in PE lessons on different surfaces at different times. This will require different footwear. We have also had a new 3G pitch - this requires a specific type of boot to be worn.

Pupils will either need to bring suitable trainers or boots to school. This will depend on the time of the year and information will always be clearly communicated. The image on the right below is not suitable footwear for PE/Citizenship practical lessons. The example on the left shows a suitable type of trainer.







## ● 3G Footwear

During the academic year 2020-21, the school had a new 3G pitch installed. As part of the agreement with the LEA, there is a strict policy in terms of footwear. All pupils (and staff) using the surface must have suitable footwear. The image below is standard across many schools with 3G surface. Pupils should have boots with rounded plastic or rubber studs. Pupils cannot wear trainers, flat soled shoes or boots with metal studs or blades on the 3G surface.



## ● PE kit helpful tips



We would encourage pupils to bring a separate bag, particularly in the winter. This is to keep possible wet clothing away from school books etc. The minimum they should do is bring a plastic bag for kit after use.

Pupils are also encouraged to bring with them a towel and spare underwear to PE lessons. Personal hygiene is important and at times pupils may get sweaty, wet or dirty depending on the nature of the activity and the time of the year.





At different stages pupil may have issues with PE kit. They might forget it, it might be too small or it may be lost. We will always help pupils and they should be comfortable speaking with any member of PE staff. In the event that a pupil cannot bring set kit, we ask them to wear an alternative. This should also be accompanied by a letter or email to explain the situation. We are able at times to help pupils with missing items from our spare kit cupboard.

- **You can buy the school uniform and PE kit at the following places:**



<b>CC Sports</b> High Street Bargoed CF81 8QS  01443 837555	<b>Dyfed Menswear</b> 11-13 Commercial Street Ystrad Mynach Hengoed CF82 7DW 01443 812159	<b>Treharris Sportsgear and Uniform</b> 44 Perrott Street Treharris CF46 5ET 01443 410327
<b>Jansan Wear Limited</b> Bowen Industrial Estate Unit 2G, Aberbargoed Bargoed CF81 9EP 01495 687013	<b>KwickStitch Embroidery Limited</b> 25 Sycamore Close Hengoed CF82 7RJ 01443 812844	<b>Tesco.com</b> - online orders



LEWIS SCHOOL PENGAM

YSGOL LEWIS PENGAM

# Communication Cyfathrebu

<b>Telephone</b>	01443 873 873 (main office)
<b>School Website</b>	lsp.wales
	Official Lewis School Pengam Lower School LSP Lewis School Pengam Attendance  Numerous others: see website
	@Ysgol_LSP  Numerous others: see website
<b>PE/ Citizenship/ Sport website</b>	<a href="https://sites.google.com/lsp.wales/pe-citizenship-sport">https://sites.google.com/lsp.wales/pe-citizenship-sport</a>

<b>Name</b>	<b>Role to you</b>	<b>email</b>
Mrs M Oliver	Head of Lower School	oliverm1@lsp.wales
Miss Thomas	Associate Head of School Form Tutor	thomass@lsp.wales
Ms Clark	ALNCo DSP for Child Protection	clarkh@lsp.wales



# FAQs

## Parents/Carers

- **Will pupils have to wear school uniform in September?**  
Yes, pupils will need to wear the school uniform in September.
- **What equipment does my son need everyday?**  
A pen, pencil, ruler, eraser, sharpener and some basic mathematical equipment.
- **Who do I contact re: school holidays?**  
Attendance and holiday forms go through Mrs Z Penrose. Her email is [penrosez@lsp.wales](mailto:penrosez@lsp.wales)
- **How does he pay for school dinners?**  
You can pay directly through Parent Pay. You will have access details from September.
- **What's Parent Pay? How do I sign up?**  
Your son will be given a letter at the start of term outlining what Parent Pay is and how you can register.
- **How can I track my son's behaviour/progress?**  
We use 'Class Charts' which is a way of tracking your son's behaviour and progress. You can sign up for it, download the app and be notified if and when your son achieves a positive or negative point for his behaviour and/ or work. To log-in, details will be communicated with you in September.
- **I can't get hold of enough uniform at the moment.**  
At LSP we have a uniform swap shop. As you can imagine a lot of uniform gets left in school and "lost". It is often not picked up by whoever left it there or we are not able to return to the rightful owner. As a consequence, we are often left with a lot of (very good quality) uniform at the end of each academic year. This year we gathered all the uniform we had, washed, dried and ironed it and formed the 'Swap Shop'. Parents/carers are able to purchase uniform for a small donation that goes directly back to school fund which in turn is used to purchase something for our pupils. If you are unable to purchase uniform, please let us know and we can help.







- **My son is interested in starting music lessons in September or has already received music lessons in primary, what is available at LSP?**

At Lewis School Pengam we offer the following instrumental lessons:

- Drums
- Guitar and Bass Guitar
- Piano
- Vocals

You will need to complete an online form to express interest for your child to have these lessons at Lewis School Pengam. This is available on our Twitter page:

[https://twitter.com/lsp\\_music](https://twitter.com/lsp_music)

We ask for a small contribution to these lessons at £50 per term. However, if there are any financial problems, we are more than happy to negotiate a payment plan for you.

If you are still unsure about any aspect of the Instrumental lessons programme, please contact Miss Jenkins on *jenkinsb@lsp.wales* If you have any finance related questions, please contact the Finance Department on *millsc@lsp.wales* (with the heading Music Department).

- **How will you know about the medical conditions my son has? How will you support them?**

All health care plans will be sent by primary schools to us.

- **What extracurricular activities does the school offer?**

We offer a wide range of extra-curricular activities. These include sporting activities; music activities; STEM clubs; Film Club; Eco Club.

- **Transport - how do I get a bus pass?**

Please visit the following link for all information regarding school transport passes.

<https://www.caerphilly.gov.uk/Services/Schools-and-learning/School-transport>



